

FDH

Ralla doppia altezza
Height-adjustable fifth wheel
Hubsattelkupplung
Sellette d'attelage bi-hauteur

2''

Omologazione - Homologation
 Genehmigung - Homologation

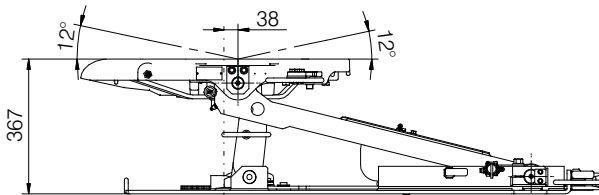
ECE R55-01

Dati tecnici - Technical data - Technische Daten - Données techniques

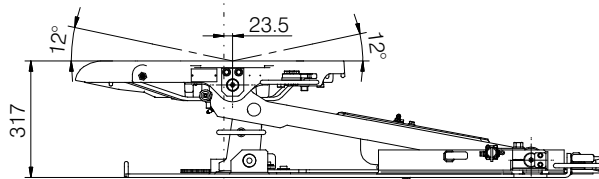
Tipo Type Typ	Codice Article number Artikelnummer Numéro d'ordre	Altezza Height Bauhöhe Hauteur mm	Carico Verticale U Vertical load U Sattelast U Charge vertical U Ton	Valore D D-Value D-Wert Valeur D kN	Peso Weight Gewicht Poids kg	Dimensioni Dimensions Dimensionen Dimensions mm	ECE R55-01	
							Classe Class Klasse Classe	Omologazione Homologation Genehmigung Homologation
FDH	FDHG001 FDHA001	167 - 267	18	120	341	1205 x 1000	S	E20-012741
	FDHG002 FDHA002	167 - 317	18	120	344	1205 x 1000	S	E20-012741
	FDHG003 FDHA003	167 - 367	18	120	346	1205 x 1000	S	E20-012741

La versione standard non prevede fori per fissaggio al telaio - The standard version is not drilled
 Die basis Version wird ohne Bohrungen geliefert - La version standard ne prévoit pas de trous pour la fixation au châssis

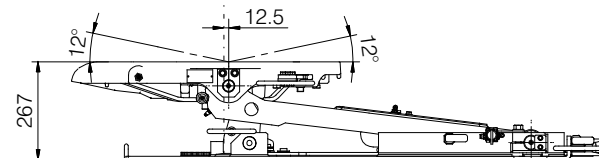
FDH---3
 posizione alta
 high position
 hohe position
 position haute



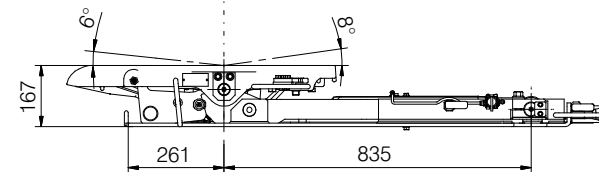
FDH---2
 posizione alta
 high position
 hohe position
 position haute



FDH---1
 posizione alta
 high position
 hohe position
 position haute



FDH----
 posizione bassa
 low position
 niedrige Position
 position basse



Ex : Codice d'ordine / Part number
Set-Bestellnummer / Set-Numéro d'ordre

	FDH	G	00	1
Ralla doppia altezza Height-adjustable fifth wheel Hubsattelkupplung Sellette d'attelage bi-hauteur Versione piatto ralla - Plate version Ausführung Aufliegerplatte der Sattelkupplung Version plateau sellette d'attelage Tipo di foratura - Type of drilling Art der Bohrungen - type de perçage Altezza - Height - Bauhöhe - Hauteur				

Versione piatto ralla - Plate version - Ausführung Aufliegerplatte der Sattelkupplung - version avec plateau sellette d'attelage

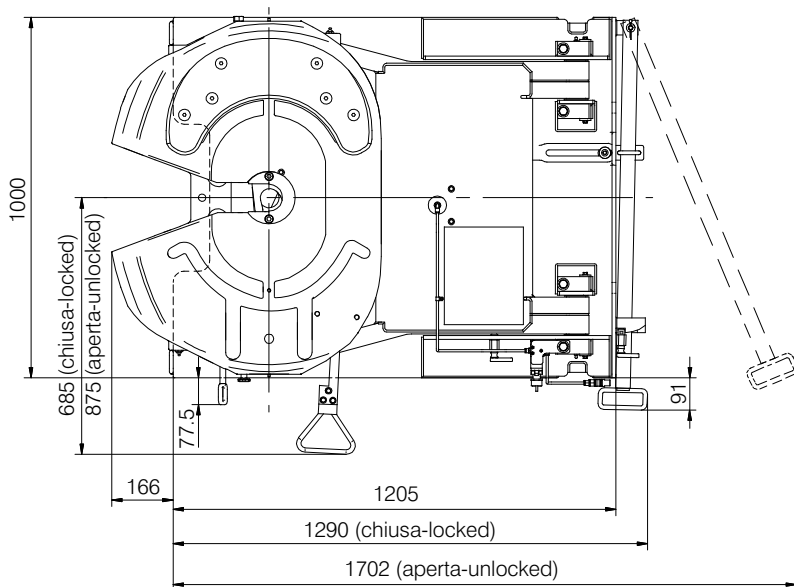
- G= Ralla con lubrificazione standard
 Standard greasing plate
 Sattelkupplung mit standardschmierung
 Sellette d'attelage avec lubrification standard
- A= Piatto autolubrificante
 Autolube plate
 Selbstschmierende Aufliegerplatte
 Sellette d'attelage à graissage automatique

Tipo di foratura - Type of drilling - Art der Bohrungen - Type de perçage

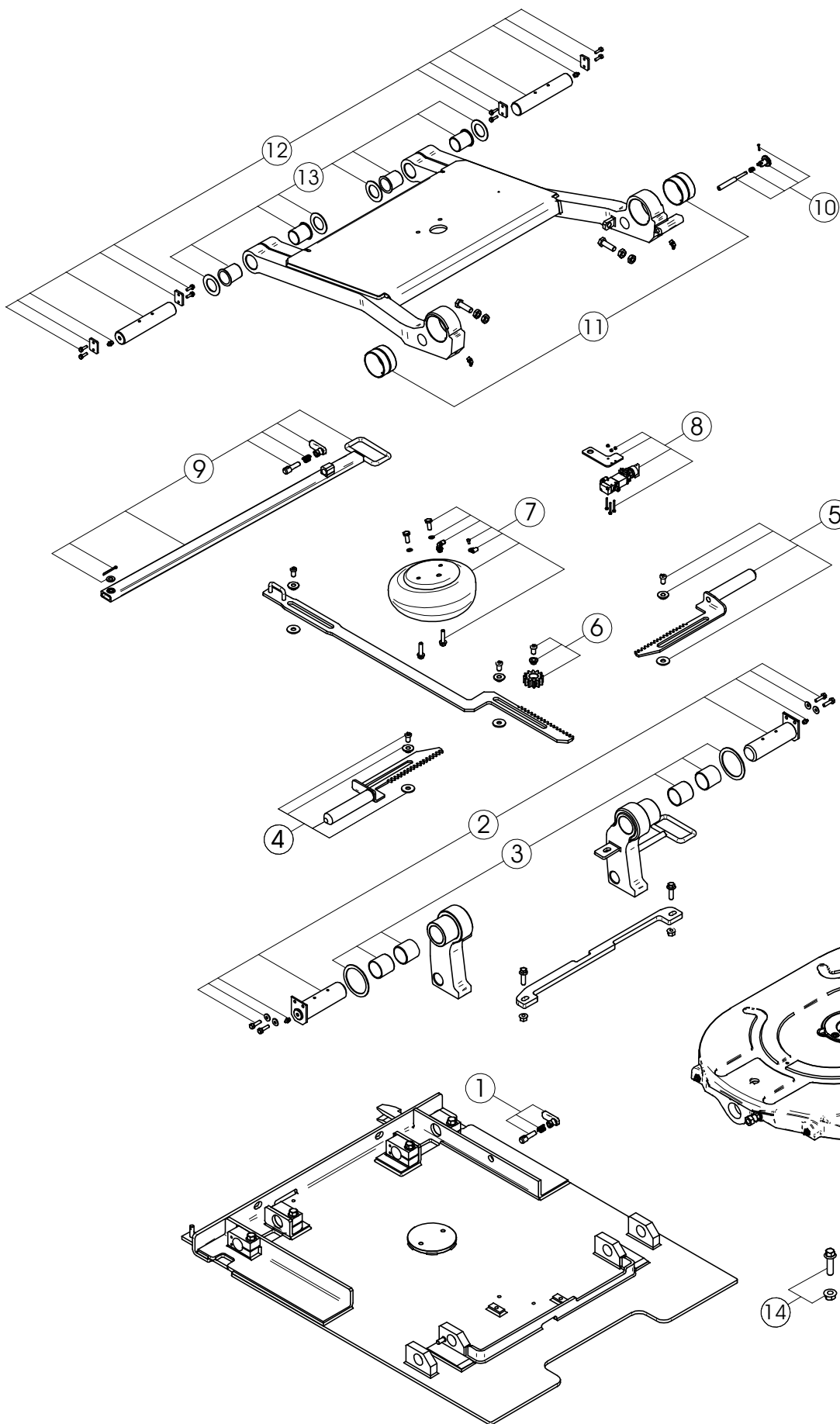
- 00 = standard (non forata - not drilled - nicht durchbohrt - non peçrèe)
- 01 = Daimler
- 02 = Iveco
- 03 = Scania
- 04 = Volvo
- 05 = Man
- 06 = Renault
- 07 = Daf
- 08 = Mercedes new Actros

Altezza - Height - Bauhöhe - Hauteur

- 1 = 267
- 2 = 317
- 3 = 367



Ricambi - Spare parts
Ersatzteile - Pièces de rechange



POS.	Tutti i tipi All types Alle Typen Tous les types
1	RR00169
2	RR00170
3	RR00171
4	RR00172
5	RR00173
6	RR00174
7	RR00175
8	RR00176
9	RR00177
10	RR00178
11	RR00179
12	RR00180
13	RR00181
14	M14 RR00182
	M16 RR00183
	M18 RR00184
	M20 RR00185

- Optional
 - kit viti di fissaggio al telaio
 - Frame fixing screws kit
 - kit Befestigungsschrauben für Fahrzeugrahmen
 - Kit de vis de fixation au châssis